



IRIS



The IRIS Consortium

**Incorporated Research Institutions
for
Seismology**



IRIS



IRIS Mission

- Facilitate and conduct geophysical investigation of seismic sources and Earth properties using seismic and other geophysical methods.
- Promote exchange of geophysical data and knowledge, both through use of standards for network operations, data formats and exchange protocols, and through pursuing policies of free and unrestricted data access.
- Foster cooperation among IRIS Members, Affiliates, and other organizations in order to advance geophysical research and convey benefits from geophysical progress to all of humanity.



IRIS



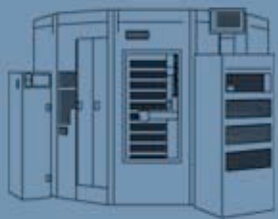
IRIS



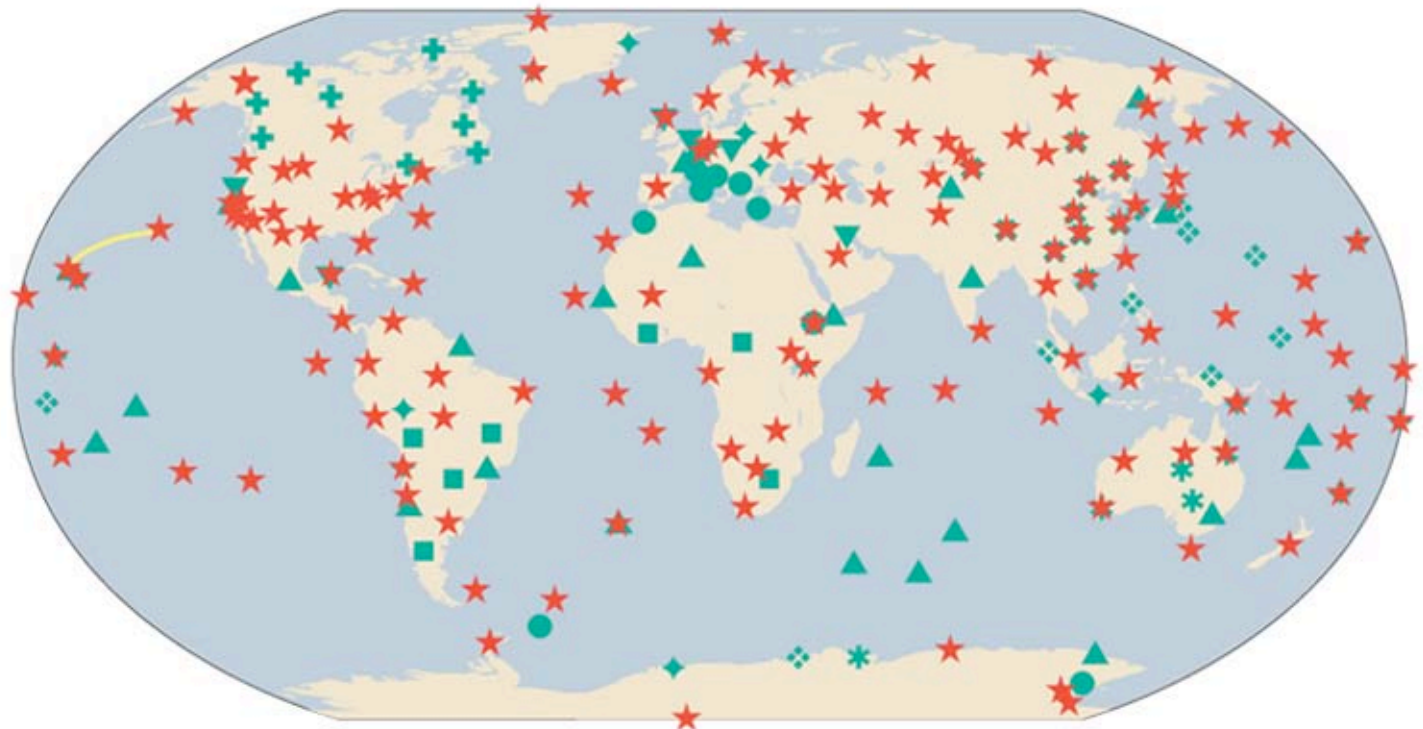
Incorporated Research Institutions for Seismology Governance and Management



IRIS



Global Seismographic Network



IRIS GSN Australia Canada France Germany Italy Japan U.S. Other

★ * + ▲ ◆ ● ❖ ■ ▼

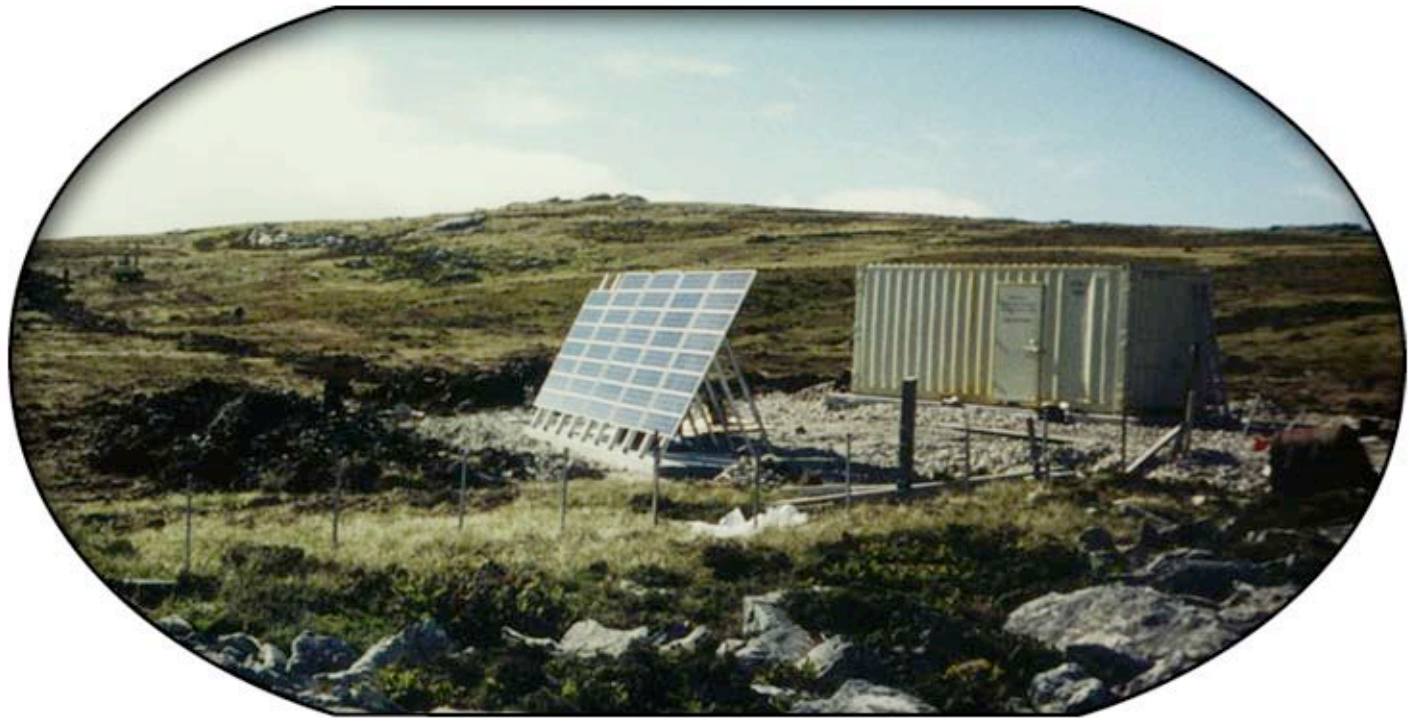
Uniform global coverage
in cooperation with US Geological Survey
and partners in the international
Federation of Digital Seismograph Networks



IRIS



Global Seismographic Network



Falkland Islands Station (EFI)

150 GSN stations in unattended locations worldwide

- including remote oceanic islands and polar regions
- previously inaccessible regions of China and the former Soviet Union

Integration with national and regional networks in many developing nations

IRIS



Program for the Array Seismic Studies of the Continental Lithosphere



Temporary field installations

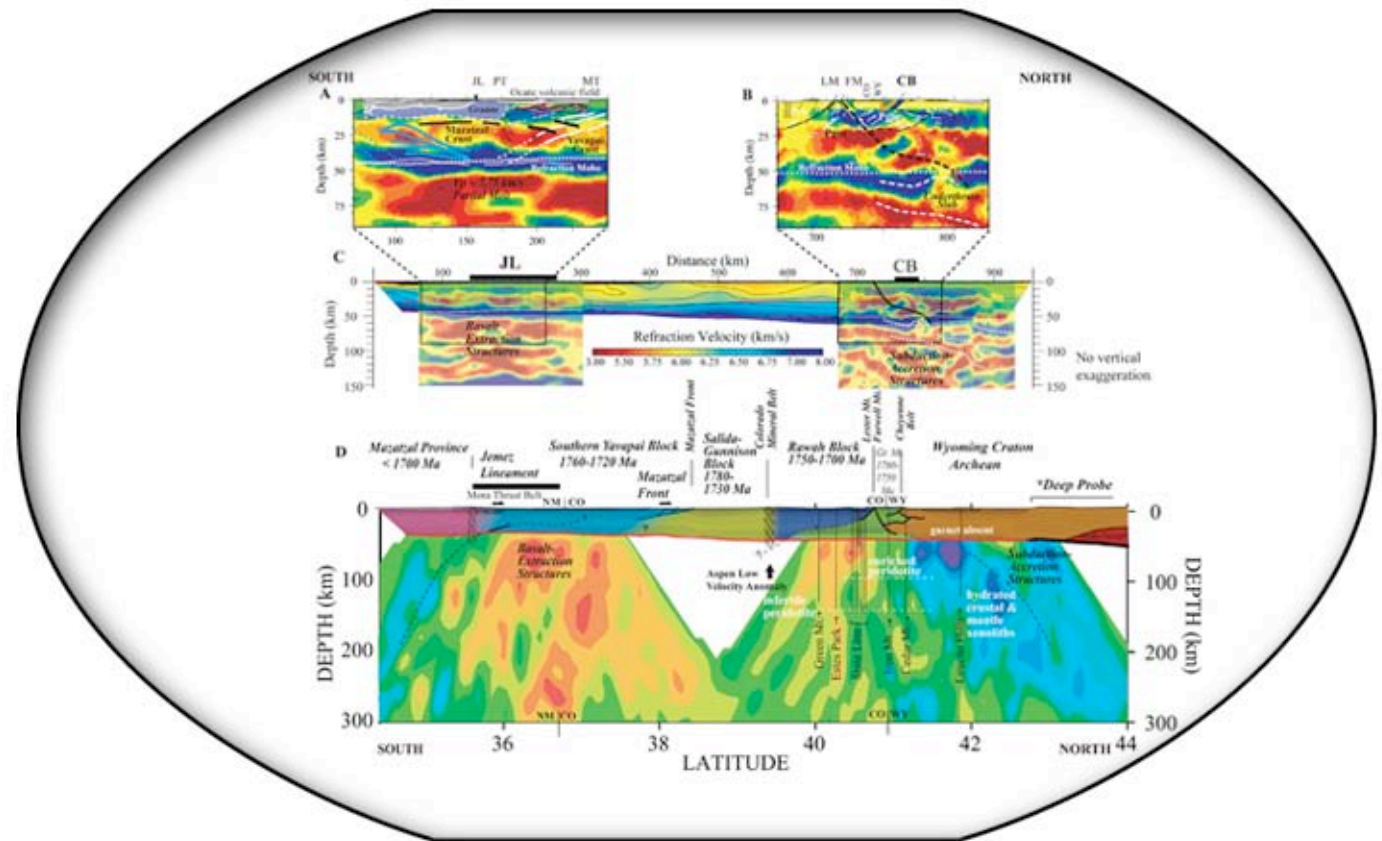
- Deployments of 10's to 100's of instruments
- Experiments lasting from 1-2 weeks to 3 years



IRIS



Program for the Array Seismic Studies of the Continental Lithosphere



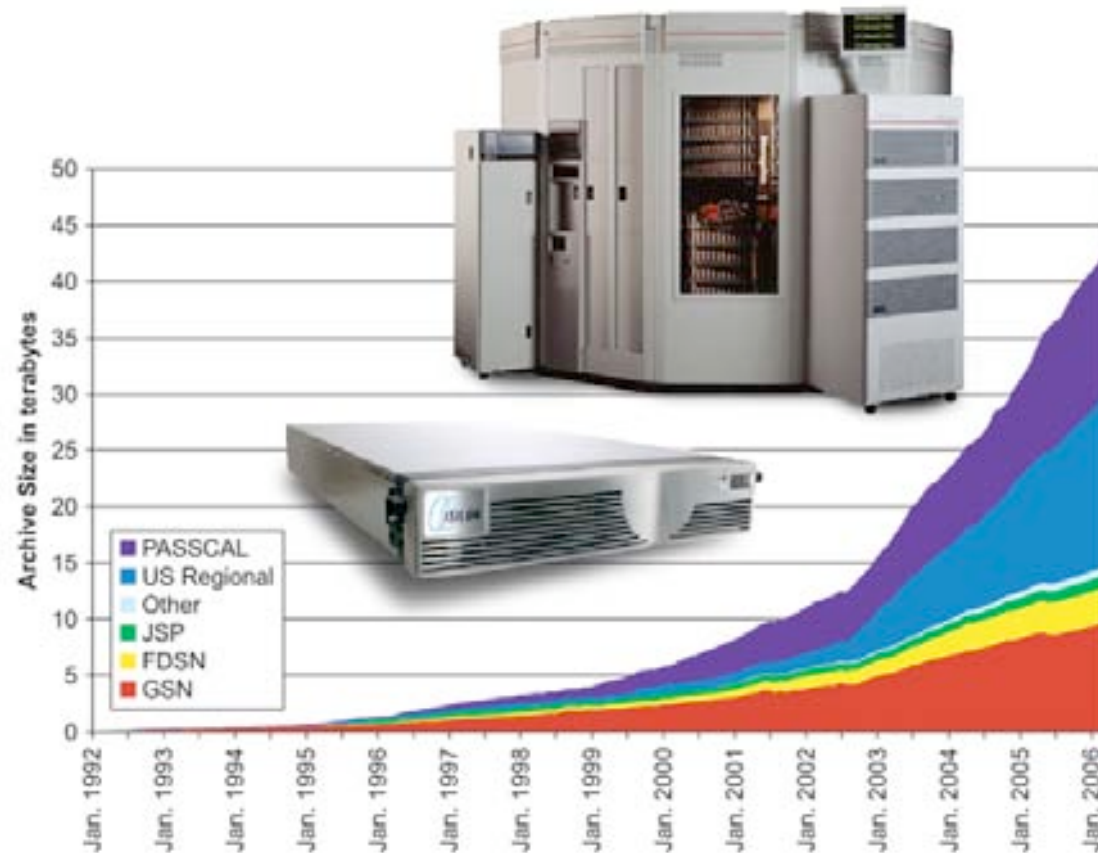
Supporting research on:

- high resolution structure of the crust and lithosphere
- applications in earthquake hazard assessment

IRIS



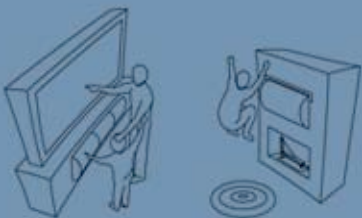
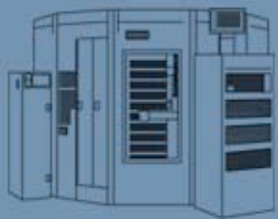
Data Management System



IRIS Data Management Center Seattle Washington

- on-line access to complete 70 terabyte archive
 - all data collected by IRIS programs (GSN, PASSCAL, USArray)
 - contributed data from US national and international sources
 - user tools provide easy web-based access to all data

IRIS



Education and Outreach



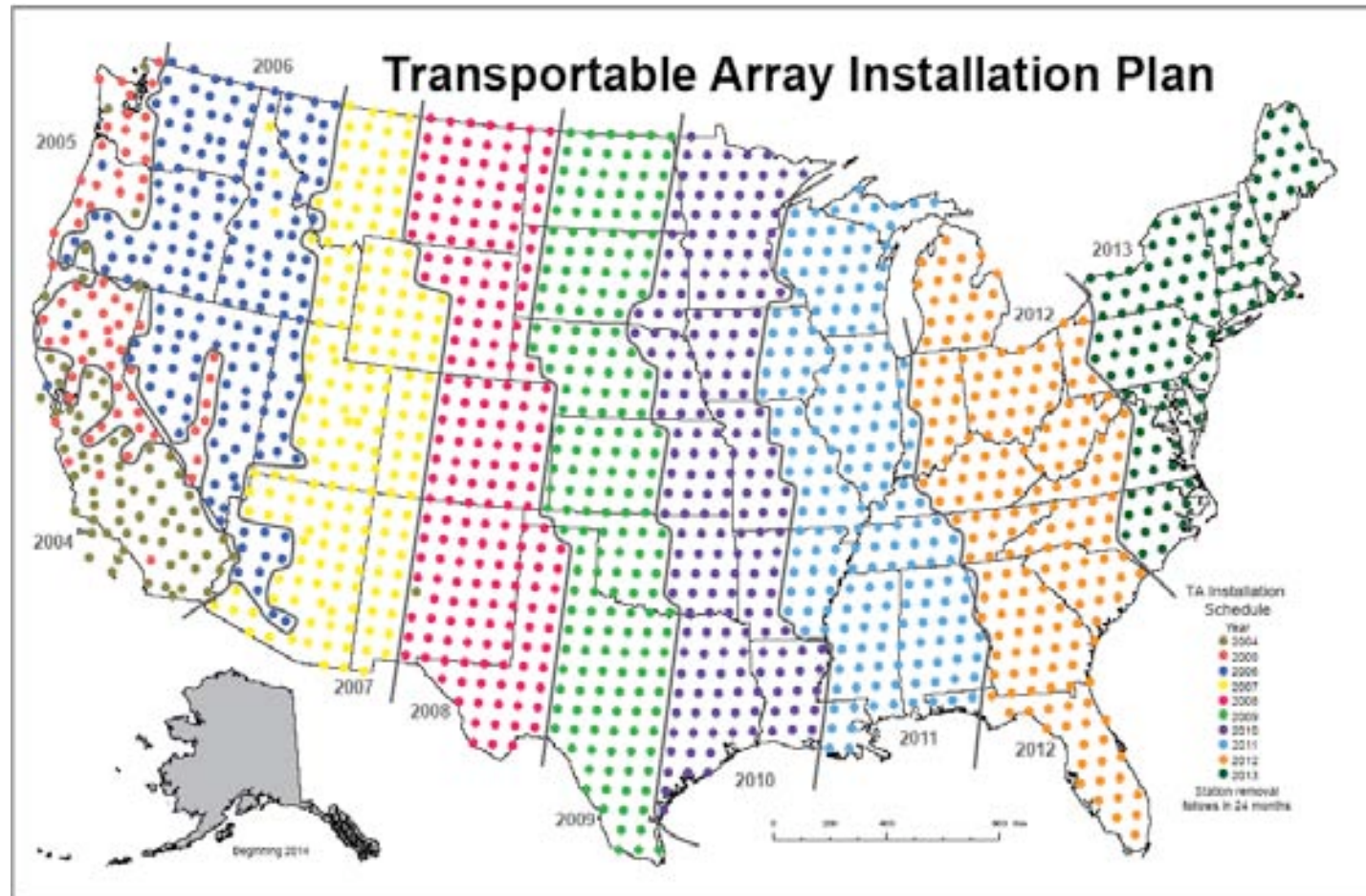
Intern Programs
Museum Displays
Distinguished Lecturers
Seismographs in Schools
Professional development
Classroom materials

- *posters and "one-pagers"*
- *>20,000 copies distributed each year*
- *additional materials & activities available through the web*

IRIS



EarthScope / USArray



Structure, Evolution and Dynamics of the North American Continent

NSF MREFC Project

Construction Phase - 2003-2008 ~\$200M

USArray - seismology

- IRIS

Plate Boundary Observatory - geodesy

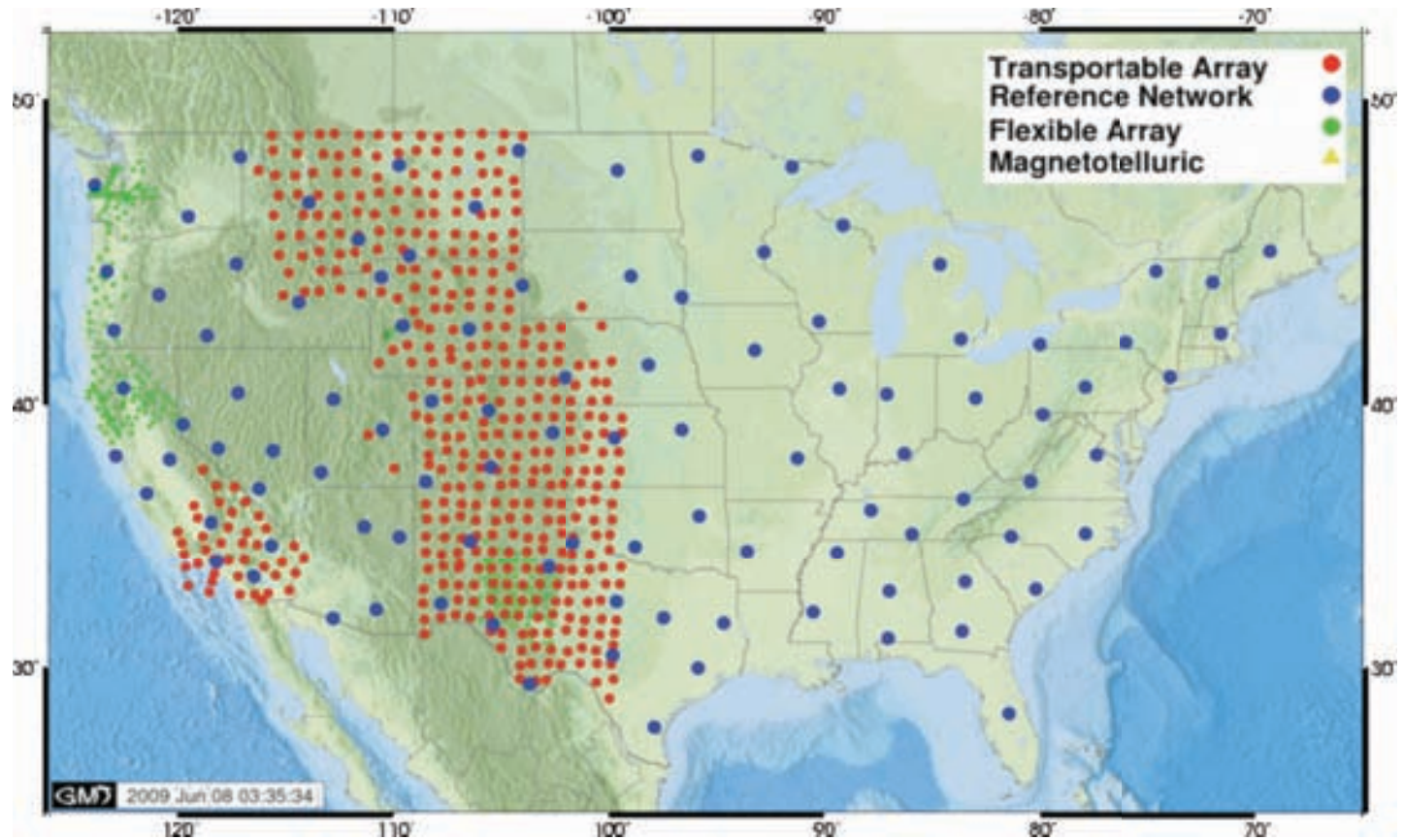
- UNAVCO

SAFOD - San Andreas Drilling

- Stanford/USGS



EarthScope / USArray



1600 sites in 10 years - 400 stations - 200 installations per year





IRIS



IRIS

